

## Changes On Campus Greet Students

By Lori Southerland  
Contributing Editor

Both new and returning students will arrive at Earlham this fall noting a variety of changes and improvements on campus this term.

The most widely discussed renovation on campus is the remodeling of the Coffeeshop in Runyan Center. Opened in 1969, the decor of the Coffee shop has remained largely unchanged until this summer. Working with a \$30,000 budget and a number of student suggestions, the original orange and brown of the Coffeeshop has now been replaced with blues and grays, colors that Wilda Jones, Director of Student Activities, says will withstand the test of time. Lighting was also changed to make the Coffeeshop brighter.

Jones says, "The Coffeeshop renovations came out of discussions last fall, talking about what we needed to do to make Earlham a more social place. Nothing was really changed other than the colors. We've tried to be responsive to student input as we could. How close we came, I don't know." Student reaction has been varied. Sophomore Josh Riley says, "I think it's fantastic. I think it looks kind of like an airport, but it's definitely better than orange and brown. The old Coffeeshop was so aesthetically hellacious!"

"It's very sterile. It's better than the orange and brown. I think it needs some plants...student artwork would be nice too," said sophomore Scott Buquor. Senior Seth Webb complained that the new Coffeeshop was too brightly lit. "The Coffeeshop is a place to go into a dark hole and talk about dead things, it's too bright for me. I liked the '70's colors and it being dark," said Webb. Some students were more to the point. "It's ugly. I hate it," said drea Pedisich.

Changes will continue in the Coffeeshop with the addition of a Subway franchise, as well as Mexican fast food fare prepared by Morrison's Foodservice. Officials

from Morrison's were unavailable for comment at press time, but details will be forthcoming in future issues of *The Word*.

Other changes in Runyan Center include the replacement of the copy machines by Student Government. Students will use the new machines as they have in the past, by purchasing a copy card at Runyan Desk. Copies will still be seven cents each. Jones says that the copy machines are upgraded from the previous machines and should last longer than the three year life span of the other machines, which printed out an estimated 300,000 copies.

Another major change in Runyan Center is the return of the arcade games from the balcony of the Coffeeshop to the Game Room in the basement. Jones says this decision arose from student concerns that the games were not handicapped accessible and that they looked out of place in the Coffeeshop. Since the Game Room and the Student Activities Board's Tazza Cafe are now occupying the same space, it is not clear what will happen.

Trueblood Fieldhouse also saw changes over the course of the summer. A new floor was laid in the weight room, primarily funded by the E-Club, consisting of Earlham alumni with varsity letters. In addition, a former squash court has been remodeled in laying down the beginning stages of the Fieldhouse's Wellness Center. Carpeted and equipped with fans to keep the room cool, the "Energy Room" as it has been nicknamed, is now home to lifecycles, a stairmaster, a NordicTrack, a rowing machine, and a television. "It's a very user-friendly room," says Athletic Director Porter Miller.

Miller says that the room will be open to Earlham students, faculty and staff at no charge, and that the greater Earlham Community will be able to purchase memberships for \$75. Miller also says that eventually courses will be offered for credit utilizing the equipment.

*Continued on Page Three*



photo: Lori Southerland

*New Student Week Staff members Sankari Muralidharan (standing) and Jeremy Lahurd paint the windows along the Japanese Rock Garden to welcome new students. The theme for New Student Week '93 was "Envisioning Community."*

## Class Of 1997 Hits Earlham Campus

By Peter Gelser  
Contributing Editor

Over the last week 317 new students have wandered around Earlham. They have participated in the new student week events and are gearing up for classes. Thirty-six of these new students are transfer students. The rest make up the class of 1997.

The new class is 53/47 percent women to men. Most of the new students are from Indiana and Ohio. 128 students to be exact. Nine of those are from Richmond itself. the second highest percent of students are from the east coast. Sixty students are from three east coast states only. The new class contains thirteen students from nine different

foreign countries.

There are thirty-four minorities who are USA citizens in the first year class.

The new class has a variety of different interests. Twenty-two percent plan to major in the natural sciences, twenty percent in the social sciences, nineteen percent in the humanities, and eight percent in the fine and performing arts. The remainder are undecided. 102 of the new class plan on participating on a varsity sport.

The new class will increase the student body to about 1,100 students. Ninety-five of those students are on foreign study programs.

Welcome to the class of 1997.



## Earlham Sports This Week

by Luke Clippinger  
Contributing Editor

There's plenty of Women's Soccer to go around today, with the beginning of the Earlham Invitational. Earlham squares off with Indiana Wesleyan University today at 2 p.m., followed by Centre College playing Wilmington on Comstock field at 4 p.m.. The tournament will come to a close tomorrow when the championship and consolation games are held at 1 and 3

respectively. The Women's Soccer team will also play at home Wednesday at 4 against Capitol.

Most of the rest of Earlham's teams are travelling this week. The Women's Volleyball team travels to the Cedarville Tournament this weekend. The Men's Soccer team travels to Marion Saturday, before coming home for their first home game Tuesday against Rose Hulman.

The Football team travels to Otterbein tomorrow hoping to pick up their first win of the season. The Field Hockey team travels to Denison to challenge that conference foe on Tuesday.

Last, but not least, the Cross Country team will run in their first meet of the season at the Wittenberg Invitational tomorrow.

Keep an eye out for Earlham's club sports tomorrow at the Organizations fair.

Death is forever.

Heart disease  
doesn't have to be.THE AMERICAN HEART  
ASSOCIATION  
MEMORIAL PROGRAM®American Heart  
Association

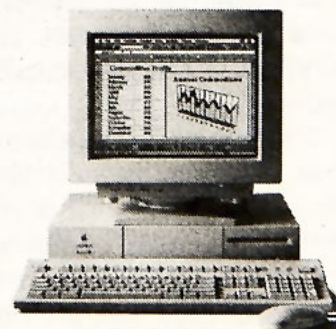
This space provided as a public service.


## Support Our Athletes!

Special student  
savings right nowWith this, you  
can save for years.

That penny jar on your dresser

Now, you can get substantial savings on these Macintosh® personal computers. You can also get special student financing with the Apple® Computer Loan\* — to make owning a Mac® even easier. To see

With these, you  
can save right now.Apple Macintosh  
Color Classic® 4/80, Built-in 10" Color Monitor and Apple Keyboard II.Apple PowerBook™ 145B 4/80,  
Built-in Keyboard & 10" Backlit Super Twist Monochrome Display.Apple Macintosh  
LC III 4/80, Apple Basic Color Monitor & Apple Keyboard II.Apple Macintosh  
Centris™ 610 4/80, Apple Basic Color Monitor & Apple Extended Keyboard II.

just how affordable a Macintosh can be, visit your Apple Campus Reseller today. And discover the power more college students choose. The power of Macintosh. The power to be your best. 

For further information visit or call Joy Wright  
Micro Sales Earlham College • 983-1674  
PC Lab — Wildman Science Library



## Men's Soccer Drops Tough One

by Luke Clippinger  
Staff Writer

The Earlham Men's Soccer Team dropped their first away game of the season to St. Francis College 2-0. The bad luck fairy again paid a visit to the Earlham defense with St. Francis scoring twice in the first half on balls that just managed to get by sophomore goalie Garrett Hall.

On the other end of the field, the Quakers created plenty of opportunities for themselves, to see them vanish in the strong wind that blew through most of the game. The Quakers had 17 shots on goal, compared to St. Francis' 6, and 7 corner kicks, where St. Francis had none. St. Francis took 17 goal kicks in the

game as they beat back the Earlham attack.

The game was also one of the most physical that Earlham may play this year. St. Francis was unsaintly on the field, racking up 24 fouls in the game to the Quakers 10.

Juniors Nigel Hall led the team with 5 shots on goal in the game, followed by another junior, Nathan Boyce, who had 4.

The Earlham Men's Soccer Team travels to Marian College tomorrow, and then returns for their first home game of the year against Rose Hulman on Tuesday at 4:00 p.m.. Join the loudest soccer fans in the NCAC as they cheer on the Quakers.

## Coffeeshop, Fieldhouse Get Facelifts Over Summer

*Continued from Page One*

Vice President in Charge of Financial Affairs Dick Smith says that College housing also saw changes over the summer. Fry House had its bathrooms improved, its kitchen enlarged and the living room remodeled to provide a "better living room and common space for the house."

Fell House, located at 716 National Road, is a new friend-

ship house holding four students this year. Purchased by the College about a year ago, Fell House had previously been rented by Earlham students.

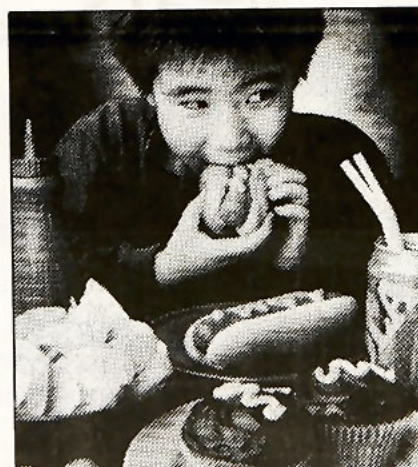
Hoerner Hall is also in the midst of renovation. Walls in the southeast wing are being rearranged to create two larger doubles and two singles.

With the arrival on campus of Bethany Seminary, the house for Earlham School of Religion

students that had been located on National Road has been relocated to the lot next to the Jewish Cultural Center on College Avenue. "It will continue to function as it has in the past for ESR, housing students," said Smith.

"I think the summer was very productive, we got quite a few things done," said Smith of the projects being finished on campus,

## Life May Begin At Forty, But Heart Disease Can Begin At Four.



Photographed by Bodi

A study of more than 8,000 children lasting 15 years suggests that it's especially prudent to encourage kids in the right eating habits. A diet low in saturated fats and cholesterol can actually lower a major risk factor for heart disease in children.

To learn more call or write your local American Heart Association.

*Your Life Is In Your Hands.*

American Heart Association



This space provided as a public service.

Career Services presents....

## Senior Meetings

Tuesday, September 14  
at noon


Wednesday, September 15  
at 1 and 4 p.m.

Runyan A+B rooms

Learn how Career Services can help you with credential files, resume advice, and graduate school information.

Keep an eye on the future  
with Career Services.

## NEVER TOO LATE.

Think you missed the Graduate Record Exam deadline? Think again. With the new on-demand GRE<sup>®</sup> you could be taking the test tomorrow. And see your score the instant you finish. Score reports are mailed 10 to 15 days later, in plenty of time for most schools' deadlines. Call now for instant registration.  Educational Testing Service

 Sylvan Technology Centers<sup>®</sup>  
Part of the Sylvan Learning Center Network

1-800-GRE-ASAP

# Side 1 Experience a Real Record Store!

3753 East Main Street  
(Kroger Plaza)  
966-9999



## BECOME A ROAD SCHOLAR IN YOUR SPARE TIME.



One Motorcycle RiderCourse will make you a better, safer rider. And riding will become more fun. Call 1-800-447-4700 for the best education on the streets.

MOTORCYCLE SAFETY FOUNDATION

# Football Loses 24-6 Women's Soccer Team Improving

by Luke Clippinger  
Contributing Editor

The Earlham Football team dropped their first game of the year 24-6 to Manchester College last Saturday. The team is coming off of a 5-5 season last year.

Manchester took the lead 3-0 in the first quarter and did not look back. The Spartans then picked up 7 in the second and 14 in the third quarters to extend their lead to 24-0.

The Quakers did manage to put 6 points on the board in the fourth quarter when sophomore Tuan Le caught first-year Mark Thompson's touchdown pass. Offensively, the Quakers were

lead by the 102 yards sophomore Kawambee Gaines passed for in the game. He was followed by Thompson who picked up 66 yards as quarterback in the second half and senior James Barber who rushed for 57 yards.

Defensively, the Quakers Jeff Myers picked off a Manchester pass for Earlham's only interception. Myers was also tied for the lead in tackles for the Quakers with 8 tackles along with Derek Johnson. They were followed by DuJuan Harris who had 7 tackles.

The Football team travels to Otterbein tomorrow with a 6:30 p.m. start against Otterbein College.

by Luke Clippinger and  
Becca Wilson  
Staff Writers

The Earlham Women's Soccer Team showed considerable improvement from last year in their first three games of the season. Despite a 1-2 record over their first three games, the team showed that they were ready to strike fear into the hearts of their opponents this year in their 2-1 overtime loss Wednesday to Ohio Northern University.

For the past two years the Quakers lost resoundingly 8-0 and 5-0 to the Bears of Ohio Northern. However this year, it was to be a different story, as the Quakers threw a spooked the Bears. The Quakers jumped out in front of the Bears in the first half with a goal from Beth Smith. Smith was assisted by Jamie Luke and Amy Napier. The Quakers played well throughout the first half, and into the second half.

Unfortunately, the Bears pulled off a shot from the middle of nowhere with 20 minutes left in the first half, knotting the game at 1-1. That sent the game into overtime, the first period of which was very physical, with the Quakers holding on. The

Bears took another shot from long distance with about 6 minutes left in the overtime that beat the Earlham defense to put the winning goal on the board for Ohio Northern.

Coach Cathy Klein was very optimistic. "We're very close to turning the corner," she said. "We are a young team, and we're still making some mistakes because we're still learning, but we're definitely moving forward here."

The Quakers one win of the week came against Maryville College, whom they defeated 1-0. The Quakers won the game when one of the nine shots that sophomore Jamie Luke took hit the back of the net. First-year goalie Jill Willison made 12 saves in the game, and when you consider that Maryville took 14 shots on goal, it shows that Willison was containing most of the offensive punch from Maryville.

In their third game of the week, the Quakers lost to MacMurray College 2-0 despite 18 saves from Willison.

The Women's Soccer Team hosts the Earlham Invitational Tournament this weekend with Earlham playing Indiana Wesleyan today at 2 p.m., and Centre College playing Wilmington College after that game at 4 p.m.. Tomorrow the winners of the opening games will meet in the championship game at 1 p.m., with the consolation game following at 3 p.m..

There's only one way  
to come out ahead  
of the pack.

# QUIT



No gain.No pain.

Maintaining a moderate weight may  
reduce your risk of heart attack.



IKE'S BIKES

111 South 6th Street  
932-5480

WELCOME FIRST YEARS!

**15% discount on all accessories  
and parts with your student I.D...**

Remember that Ike's has a wide selection of Giant,  
Specialized and Trek bikes to choose from.

Offer ends September 15th

Offer not good with any other offer

WE USE AND RECOMMEND  
**matrix**  
HAIR & SKIN CARE



As U Like Barber Shop.

Haircuts-Hairstyles  
HairPieces-Hair Color  
Appointments or  
Walk-Ins  
**966-5453**

7 East Main (next to Main St. bridge).

**Recycle.**

Photographer Photographer Photographer Photographer Photographer Photographer Photographer

**Can You Take A Picture? Take One For The Word.**  
Access to the Student Media Darkroom Equipment for Word Photographers.  
Talk to Stephen Lorenz at x1569.

Photographer

Photographer

Photographer Photographer Photographer Photographer Photographer Photographer Photographer Photographer



***Please enter my subscription to The Earlham Word.***

☐ One term (10-11 issues) for \$10

☐ One year (30-33 issues) for \$25

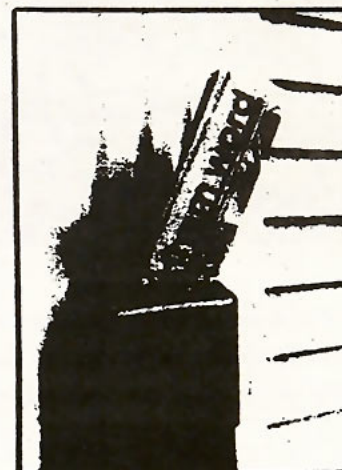
Name: \_\_\_\_\_

Address: \_\_\_\_\_

City/State/Zip: \_\_\_\_\_

Mail coupon to: The Earlham Word; Drawer E-273; Earlham College; Richmond IN 47374-14095 Please enclose payment with order. Mark checks payable to The Earlham Word.

☐ I am an alum of the Earlham Post or Earlham Word.




**DON'T PANIC.  
YOU CAN  
STILL TAKE  
THE GRE.®**

Think you missed the Graduate Record Exam deadline? Relax. With the new on-demand GRE,® you could be taking the test as early as tomorrow. And since you choose the date, you can test at your best. You can even see your score the instant you finish. Score reports are mailed 10 to 15 days later, in plenty of time for most school deadlines. Call now for complete information and instant registration.  
ETS Educational Testing Service

 Sylvan Technology Centers®  
Part of the Sylvan Learning Center Network

**1-800-GRE-ASAP**

**YOU DON'T HAVE  
TO DRINK  
TO RIDE DRUNK.**

Medicine can affect your balance, coordination, and vision as much as alcohol. After drinking or taking medication, don't ride. That's the best safety prescription.  
  
**MOTORCYCLE SAFETY FOUNDATION**



**BOWLING**  
Use your  
Earlham  
discount  
when you  
bowl!

3919 National Road West  
962-3201

**STUDENT  
ORGANIZATIONS  
CAN PHONE FOR  
CASH**

Earn cash for your hall, team or organization by phoning for the Earlham Fund. By calling alums for the Earlham Fund, you will be raising money for Earlham College's financial aid program, as well as making \$ for your groups treasury. Free dinner and free long distance phone call to all phoners! Calling will occur evenings (plus one weekend) from October 18th to November 4th. Contact Connie or Pat at x1644, Drawer 193 for more details.

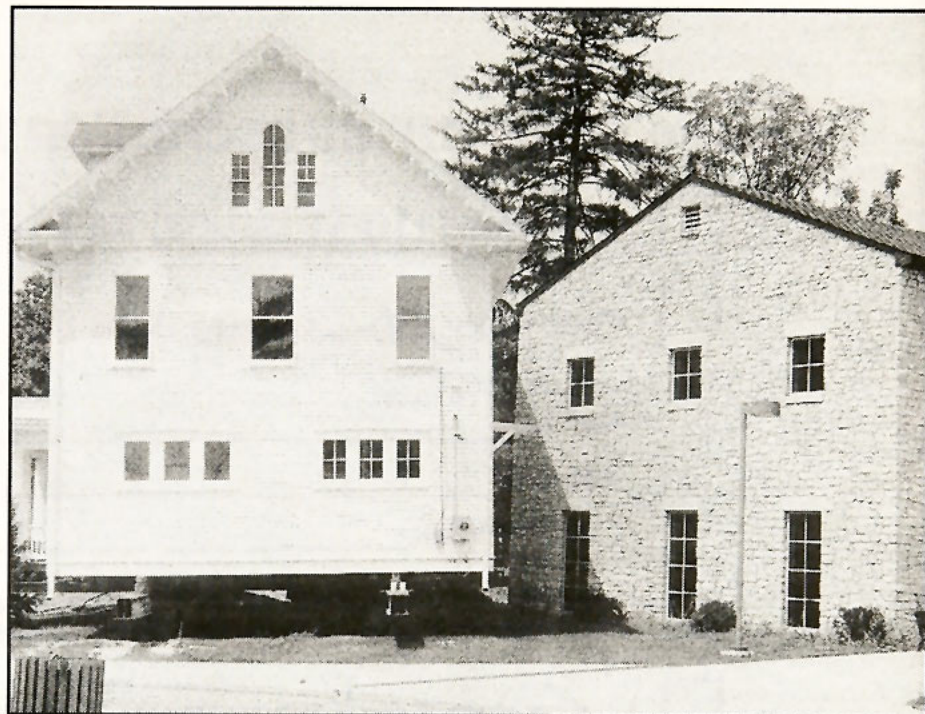
**DOMINO'S  
PIZZA**  
515  
National  
Road  
West  
966-8351

**Welcome  
New  
Students!**





*Construction began this summer on a new classroom building for Bethany Seminary, scheduled to be open in the Fall of 1994.*



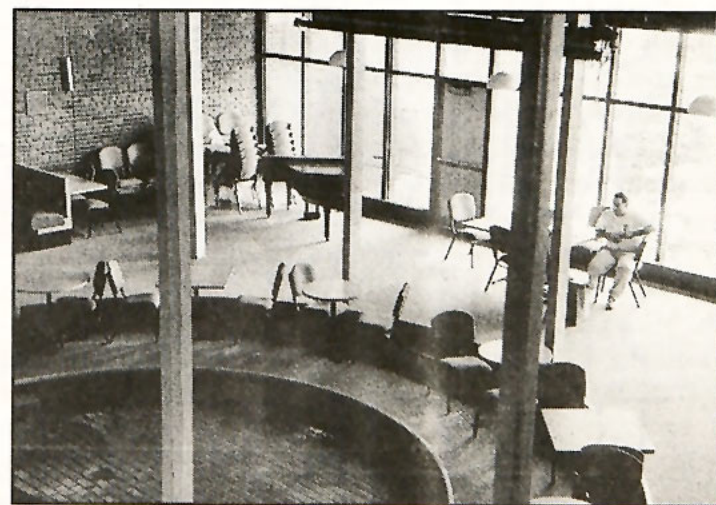
*Earlham's first college owned mobile home??? The School of Religion House moved to make way for Bethany Seminary was put on wheels and moved to its new location on College Avenue.*

## Photos:

*Lori Southerland*



*New Student Week's Front Table Committee (led by Fern Williams) greeted incoming first years with T-shirts, candy, and a packet full of information.*



*Senior Justin Connor enjoys a quiet moment in the newly refurbished Coffeeshop.*



## Blueprints To The *Earlham Word*

Last week, I wrote an introduction to a series of articles whose purpose is to describe in detail the policies of *The Earlham Word*. The focus of this task is to present to the Earlham Community the purpose and policy of the *Word*.

The image of *The Earlham Word* has become negative around campus due to a lack of consistent policy. In this column I will attempt to describe the general policy of the Earlham *Word*. Over the next few weeks I will continue by explaining the Opinion policy along with other policies that govern the *Word*. These articles are blueprints, exceptions may be made if it is deemed appropriate or necessary by the newspaper staff.

The Organizational Charter of the *Word* states that the general policy of the Earlham *Word* "shall be gathering and distributing news and opinion." This purpose is intended to serve the Earlham

### A Word Please

**Peter Gelser**

Community by informing its members and enabling them to make judgments on the issues of the time. Furthermore, the Earlham *Word* "shall serve as a chronicle of Earlham College".

In order to achieve this purpose the *Earlham Word* has a number of policy points. The first point reads "the *Word* will make every effort to assure that the news content is accurate, free from bias and in context and that all sides are presented fairly". Editorials are held to the same standards of accuracy with respect to facts. This point is perhaps the most difficult part of the Earlham policy and the *Word* is consistency under at-

tack on this issue. Unfortunately, we are still learning the newspaper trade and it is impossible to check every fact and figure. Nevertheless, we realize that it is our responsibility to follow this policy and we continuously attempt to be more accurate. (It would be helpful if *Word* readers would help us by writing us with any factual corrections.)

Another aspect of this point is the need for an unbiased independent view. The *Word* is independent of the administration and campus organizations. Due to the nature of Earlham most of our staff is involved in campus organizations. Every attempt will be made to insure that the writer is not involved in an event. Do not come to us with an offer to write a news article about your organization as we cannot accept it. (There are opportunities to write such a piece on the opinion

pages.) The only consistent exception to this policy is in Sports. Sports writing is generally filled with scores and statistics. For this reason team members are allowed to write stories. A sports editor checks such stories for accuracy and bias.

Our readers should remember when they read the *Word* that the *Word* is a newspaper that is continuously striving for perfection. At the same time the *Word* is an organization that is still learning. For the past year we have not had any advisor so it has become difficult to correct our own mistakes. Please keep these issues in mind when you read the *Word* please bring any concerns to us. I will be continuing this series of articles next week. Next week will be a continuation of the *Word's* general policy.

## The Continued Struggle For Choice

Hopes were high after the November election that pro-choice lawmakers would swiftly replace the dangerous and divisive anti-choice policies of the Reagan/Bush years with policies that would safeguard reproductive health, personal privacy and individual liberty.

Barely a few months later, those hopes have given way to uncertainty. The House of Representatives has voted to continue the Hyde Amendment, once again callously denying abortion services to poor women. Anti-choice violence and terrorism have escalated, as demonstrated by the brutal murder of Dr. David Gunn. Michigan is about to become the fifth state to impose dangerous new obstacles to abortion since President Clinton took office. And a sponsor has defected from the Freedom of Choice Act because, she said, the bill doesn't go far enough in securing reproductive health options for poor women and young women.

What many of us suspected all along is becoming apparent: Bill Clinton's election has not ensured victory for the pro-choice movement.

### Random Thoughts Vicky Hunter

To undo the damage of 12 years of anti-choice administration and to succeed in the face of today's political realities, supporters of choice need a multifaceted approach. No single bill can strike down anti-choice state laws, end the funding discrimination that has plagued poor women for 17 years, protect against anti-choice vigilantes, include abortion in the national health care plan, secure young women's access to reproductive services and achieve majority support in Congress. But each pro-choice legislative goal is critical. Lately, the Freedom of Choice Act has become a political hot potato, generating criticism from all sides. It is worth remembering what this bill really does. The Freedom of Choice Act is not a radical bill that goes farther than *Roe v. Wade*,

as the anti-choice forces claim - nor is it a panacea, as abortion rights supporters would like. By itself, the Freedom of Choice Act would not repeal the Hyde Amendment or invalidate the restrictions on young women's access to abortion that were considered constitutional prior to the 1989 Webster decision.

But the Freedom of Choice Act would restore the protections of *Roe v. Wade* that were in place from 1973 to 1989. It would strike down waiting periods and other punitive and dangerous anti-choice laws that hit rural women, poor women and young women especially hard.

It would create a federal statutory right that protects against future assaults by anti-choice politicians and courts. And it would create momentum for other critical pro-choice victories.

The debate over the Hyde Amendment was typical; opponents of choice are mounting a relentless drive to divide and conquer America's pro-choice majority. They count on urban women not to care about the waiting periods that punish rural women. They count on

women of means not to care if poor women are forced into back alleys. They count on women of color and white women not to care about or trust each other.

The challenge for the pro-choice America is to show that we do care, that we are too smart and too determined to be polarized.

If we sacrifice the Freedom of Choice Act because it does not in itself embody the entire pro-choice vision, we miss a rare opportunity to make progress. If, ultimately, we accept nothing because we cannot get everything we hand opponents of choice a victory they did not win.

Today's fight over the Freedom of Choice Act isn't about rich and poor, black and white, urban and rural or young and old. It is about standing together and facing down the religious right, about refusing to squander last year's election gains and about making a real commitment to the long-term battle for the multifaceted legislative program that will secure true reproductive choice for Women of America and abroad.

## Need work study?

Work for The Word. Applications are available at Runyan Desk.

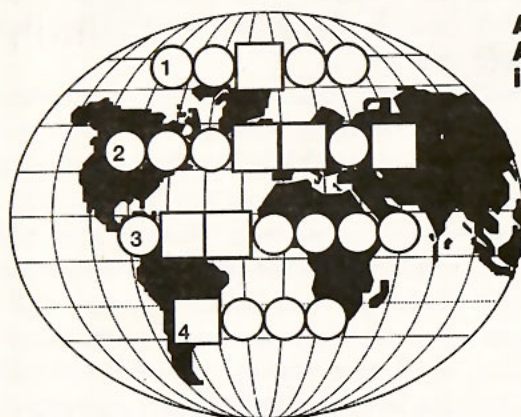
**Do it!!**



PEACE CORPS WORLD WISE **PuZZLE**

For further information about Peace Corps, write Box 896, Washington DC 20526

INSTRUCTIONS: The U.S. Peace Corps has volunteers serving in more than 70 nations around the world. By solving this puzzle, you will learn about one of these countries. Solve the four numbered puzzle words and then unscramble the letters in the squares to produce the name of the country darkened on the map at the right.



A nation adjacent to South Africa which gained its independence in 1990.

1. Acronym for title of black separatist group now in control of this country's government.

2. Mineral used in the production of nuclear energy.

3. A very valuable, colorless gemstone.

4. Flesh of an adult cow.

Solution: 1. SWAPO 2. uranium 3. diamond 4. beef = Namibia

## TAKE DRUGS AND LOSE ALL YOUR FRIENDS.



If you think drugs cost a lot now, wait until after college. They could cost you a career. Last year alone, America's

businesses lost more than \$60 billion to drugs. So this year, most of the Fortune 500 will be administering drug tests.

Failing the test means you won't be considered for employment. And that's one hell of a price to pay.

### WE'RE PUTTING DRUGS OUT OF BUSINESS.

Partnership for a Drug-Free America

## Trustee Edward G. Wilson Dies

by Peter Gelser  
Contributing Editor

Memorial services will be held on Sunday to honor Edward G. Wilson. Wilson was chairman of the Board of Trustees in the 1960s and early 1970s. He was elected a trustee for life in honor of his long commit-

ment. The new Wilson residence hall was named for him. Wilson died at his home on July 24. He was 84 years old. The service will be held in Stout Meetinghouse at 2 pm. He will be laid to rest in Earlham Cemetery after the service.

## AT THE MOVIES

Cinema VI  
4701 East National Road  
962-0000

### The Man Without A Face (PG-13)

Friday	5:00	7:30	9:45
Sat/Sun*	2:30	5:00	7:30
Weekdays	5:00	7:30	

### Needful Things (R)

Friday	4:30	7:15	9:45
Sat/Sun*	1:30	4:30	7:15
Weekdays	4:30	7:15	

### Undercover Blues (PG-13)

Friday	5:15	7:15	9:15
Sat/Sun*	1:15	3:15	5:15
Weekdays	5:15	7:15	

### The Fugitive (PG-13)

Friday	4:15	7:00	9:45
Sat/Sun*	1:00	4:15	7:00
Weekdays	4:15	7:00	

### Free Willy (PG)

Friday	4:30	7:15	
Sat/Sun*	2:00	4:30	7:15
Weekdays	4:30	7:15	

### Secret Garden (G)

Friday	4:45	7:00	9:15
Sat/Sun*	2:00	4:45	7:00
Weekdays	4:45	7:00	

### Fortress (R)

Daily			9:30
-------	--	--	------

Mall Cinema  
Gateway Shopping Center  
966-5116

### Hard Target (R)

Friday	4:30	7:00	9:30
Sat/Sun*	2:00	4:30	7:00
Weekdays	4:30	7:00	

### Poetic Justice (R)

Friday	5:00	7:30	9:45
Sat/Sun*	2:30	5:00	7:30
Weekdays	5:00		

Sidewalk Cinema  
Trivoli Building  
962-3905

### Hocus Pocus (PG)

Friday		7:00	9:00
Sat/Sun*	2:00	7:00	9:00
Weekdays		7:00	

### Weekend At Bernie's II (PG)

Friday		7:15	9:15
Sat/Sun*	2:15	7:15	9:15
Weekdays		7:15	

\* Please Note: There are no late shows on Sundays