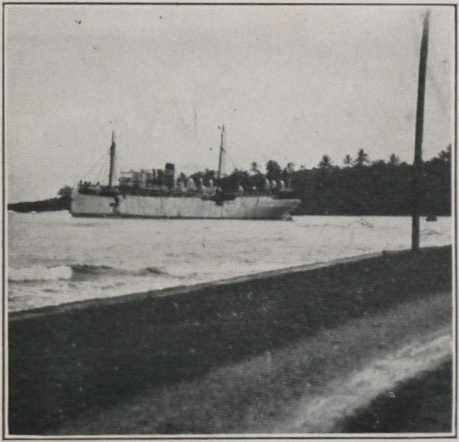


JAMAICA PICTURES



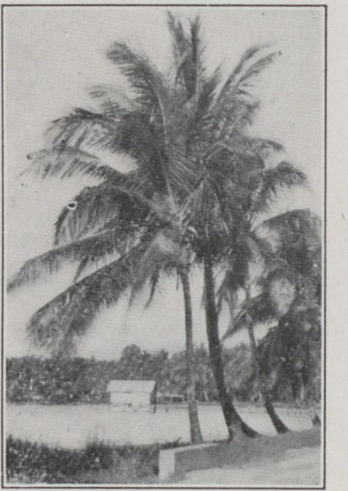
1



2



3



4



5



6



7



8



9



10



11



12



13



14



15



16



17



18



19



20



21



22



23



24



25



26

JAMAICA PICTURE SHEET

1. Bound for Jamaica.
2. Continuation School at Highgate, Lora P. Arms, Principal. A school for girls who have reached their 16th year so cannot attend Government schools.
3. Girls in Lyndale Home.
4. Cocoanut palms along the King's Highway.
5. Boys at Glenleigh - members of the Swift Industrial School.
6. An East Indian peasant ^{Woman} school.
7. East Indian orphans at Lyndale Girls Home.
8. Boys on playground at Glenleigh.
9. Alice I. Kennedy.
10. Alsina M. Andrews.
11. Alta Hoover.
12. Ruth Sundarie.
13. Adlin Kisson.
14. Mary E. White and H. Alma Swift.
15. Florence Mae Smith, Matron of Happy Grove School at Seaside.
16. Back row, L. to R: Sada F. Stanley, Margaret H. Michener, Paul Michener, Gladys Smith Jones, Percy Smith, Mrs. Smith, Lora P. Arms; Front row, L. to R: Mary E. White, "Sister" Jones, H. Alma Swift, Alta Hoover.
17. Orange Bay Meeting House and School.
18. Jamaican Milk Cart.
19. Seaside Chapel.
20. Lyndale Girl.
21. Entrance to Swift Home for Boys at Glenleigh.
22. Boys Dormitory at Glenleigh.
23. Andrews Hall for Girls at Seaside.
24. Group of East Indian Girls at Lyndale.
25. Jamaican Market, Mary E. White in foreground.
26. Group of boys at Happy Grove School at Seaside.